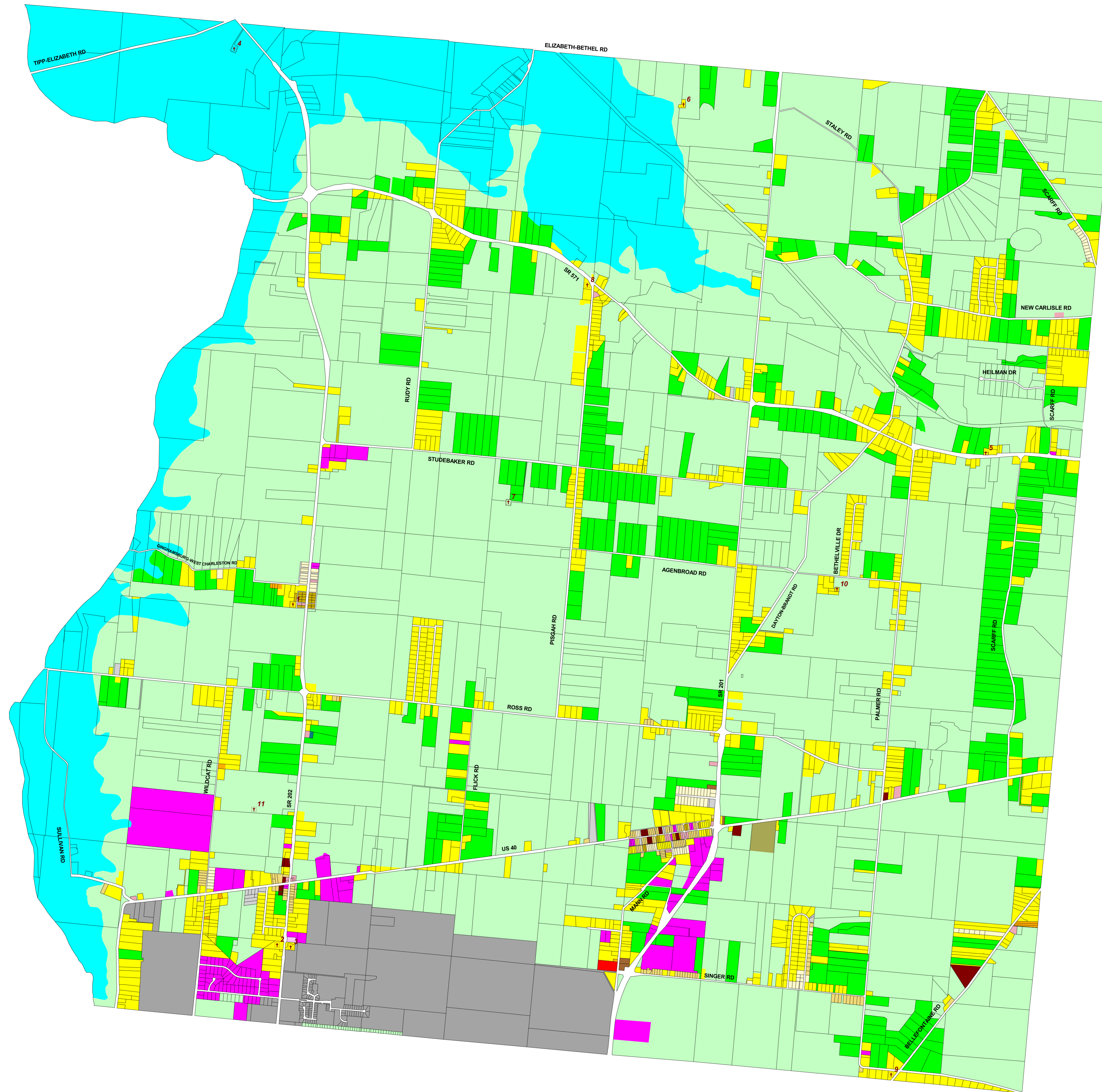


# Official Zoning Map



## Bethel Township Miami County, Ohio January, 2002

### Map Revisions

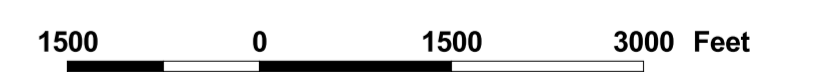
By official action of the Board of Trustees,  
the following changes were made:

No.	Date	Case #	Initials
1.			
2.			
3.			
4.			
5.			
6.			
7.			
8.			
9.			
10.			
11.			
12.			
13.			
14.			
15.			
16.			
17.			
18.			
19.			
20.			

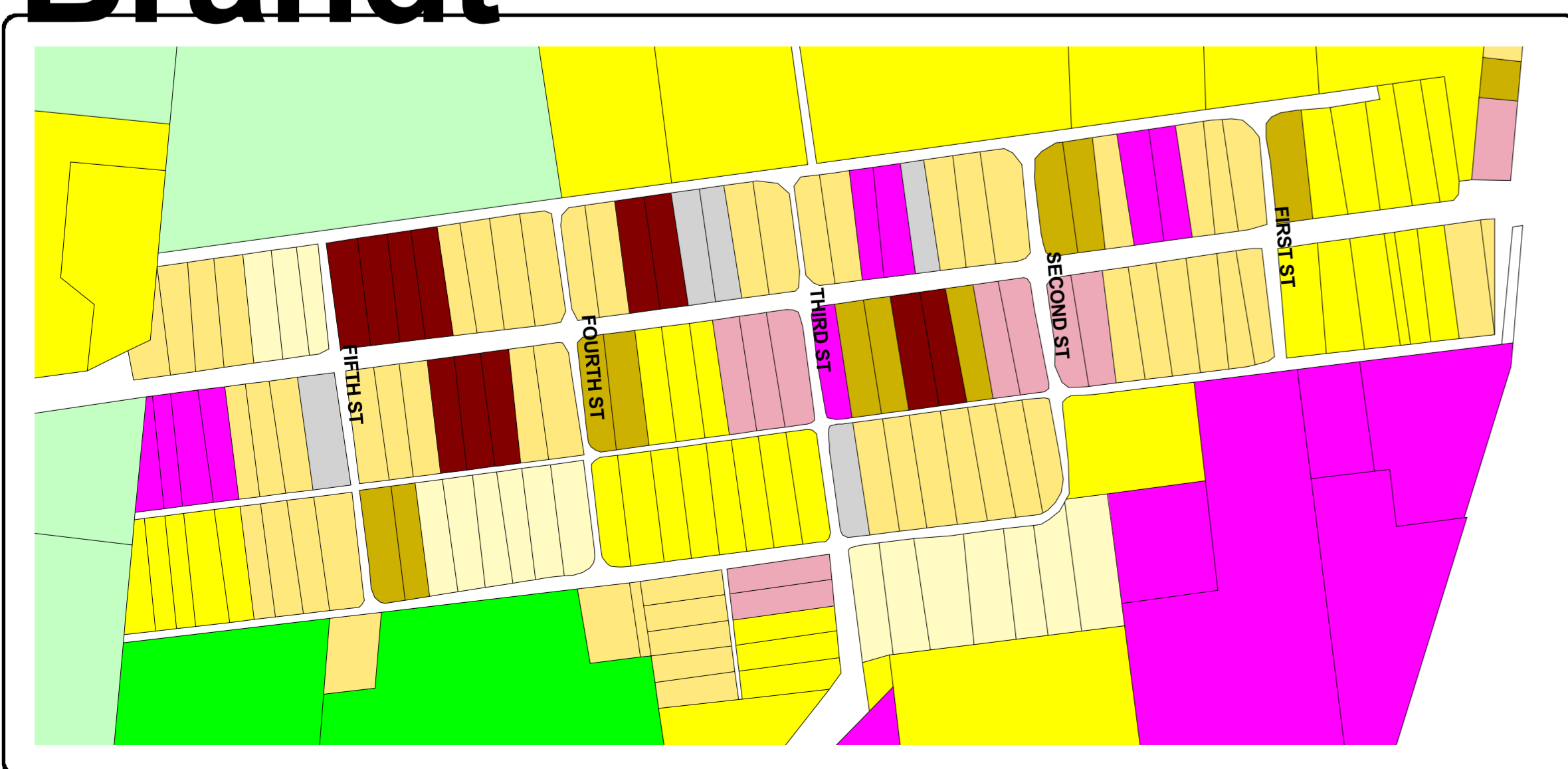
This is to certify that this is a true copy of the  
Official Zoning Map of Bethel Township  
referenced in Section 4.02 of the  
Bethel Township Zoning Resolution.  
Effective Date: May 20, 1981

Chairman \_\_\_\_\_ Trustee \_\_\_\_\_  
Trustee \_\_\_\_\_ Clerk \_\_\_\_\_

NOTE: Zoning extends to center of Street Right-of-Way



## Brandt



5 Cemetery

- 1 West Charleston Cemetery (active)
- 2 Bethel West Cemetery (active)
- 3 Bethel East Cemetery
- 4 Honeycreek Cemetery
- 5 Crawford Cemetery
- 6 Saylor Cemetery
- 7 Studebaker Cemetery (private)
- 8 Pisgah Church Cemetery
- 9 Palmer Chapel Cemetery
- 10 Hickory Grove Cemetery (active/private)
- 11 Freeman Cemetery

- R-1AAA One Family Residential District 0.717-acre lots
- R-1AA One Family Residential District 0.5-acre lots
- R-1A One Family Residential District 12,000-15,000 square feet
- R-1B One Family Residential District 10,000-12,000 square feet
- R-1C One Family Residential District 8,000-10,000 square feet
- R-2 Two Family Residential District - 1 & 2 Family
- R-3 Multi-Family Residential District - 3 or more families
- B-1 Highway Business
- B-2 Office/Residential District
- B-3 Neighborhood Business District

- I-1 Light Industrial District
- I-2 Heavy Industrial District
- F-1 Flood Plain
- A-1 Domestic Agricultural District
- A-2 General Agricultural District
- Planned Residential Development District
- Planned Business Development District
- Planned Industrial Development District
- Municipal (Huber Heights)

