

Official Zoning Map

Bethel Township Miami County, Ohio January, 2008

Map Revisions

By official action of the Board of Trustees,
the following changes were made:

No.	Date	Case #	Initials
1.			
2.			
3.			
4.			
5.			

This is to certify that this is a true copy of the
Official Zoning Map of Bethel Township
referenced in Section 4.02 of the
Bethel Township Zoning Resolution.
Effective Date: May 20, 1981

Chairman

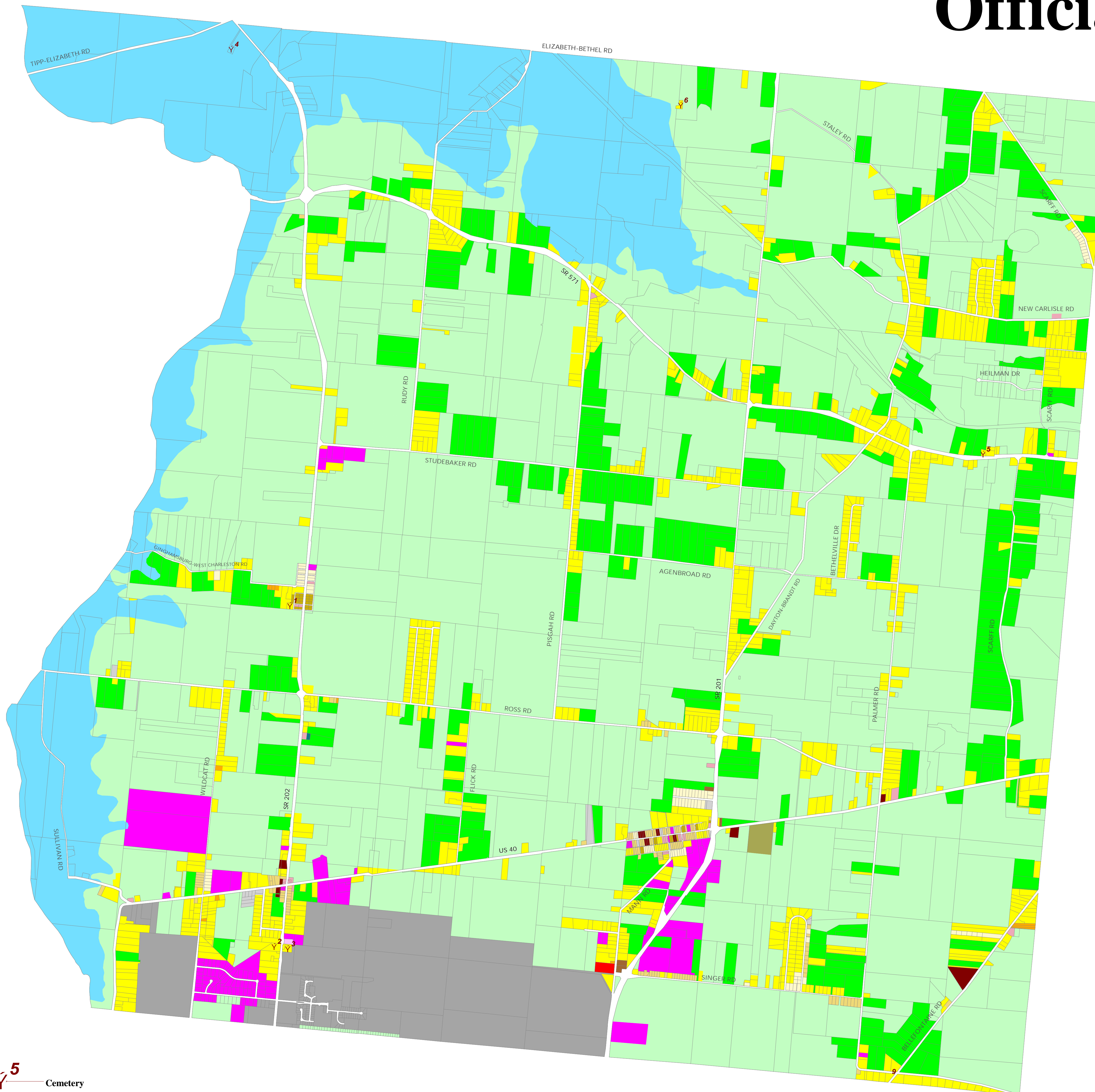
Trustee

Trustee

Clerk

NOTE: Zoning extends to center of Street Right-of-Way

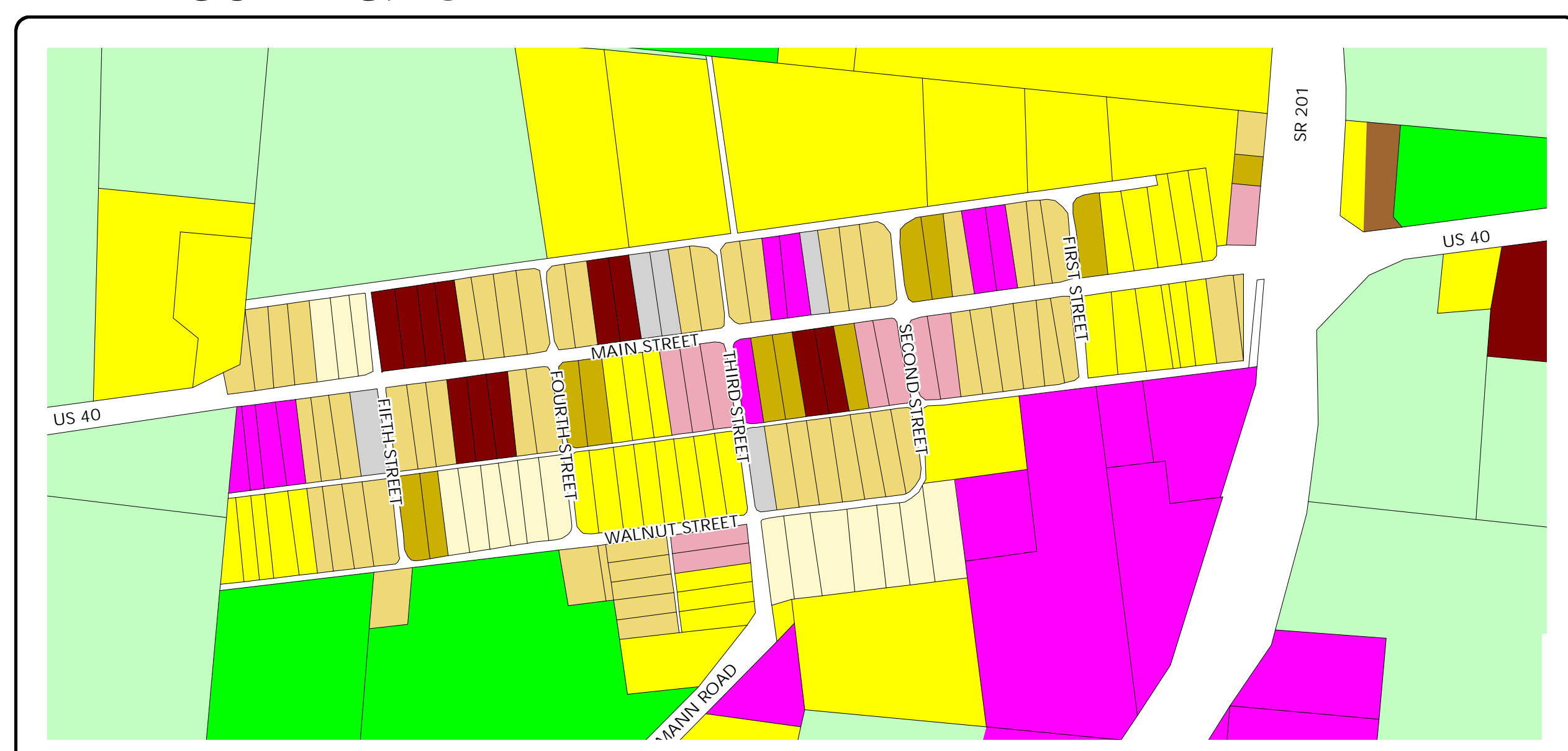
0 750 1,500 3,000 Feet



5 Cemetery

- 1 West Charleston Cemetery (active)
- 2 Bethel West Cemetery (active)
- 3 Bethel East Cemetery
- 4 Honeycreek Cemetery
- 5 Crawford Cemetery
- 6 Saylor Cemetery

Brandt



- R-1AAA One Family Residential District 0.717-acre lots
- R-1AA One Family Residential District 0.5-acre lots
- R-1A One Family Residential District 12,000-15,000 square feet
- R-1B One Family Residential District 10,000-12,000 square feet
- R-1C One Family Residential District 8,000-10,000 square feet
- R-2 Two Family Residential District - 1 & 2 Family
- R-3 Multi-Family Residential District - 3 or more families
- B-1 Highway Business
- B-2 Office/Residential District
- B-3 Neighborhood Business District

- I-1 Light Industrial District
- I-2 Heavy Industrial District
- F-1 Flood Plain
- A-1 Domestic Agricultural District
- A-2 General Agricultural District
- Planned Residential Development District
- Planned Business Development District
- Planned Industrial Development District
- Municipal (Huber Heights)

Prepared By: Miami Valley Regional Planning Commission, June 2001,
updated January 2008
Prepared For: Bethel Township Trustees, Miami County, Ohio